

I. Choose the name of the valve that maintains the pressure **BELOW** the set value.

PreIV

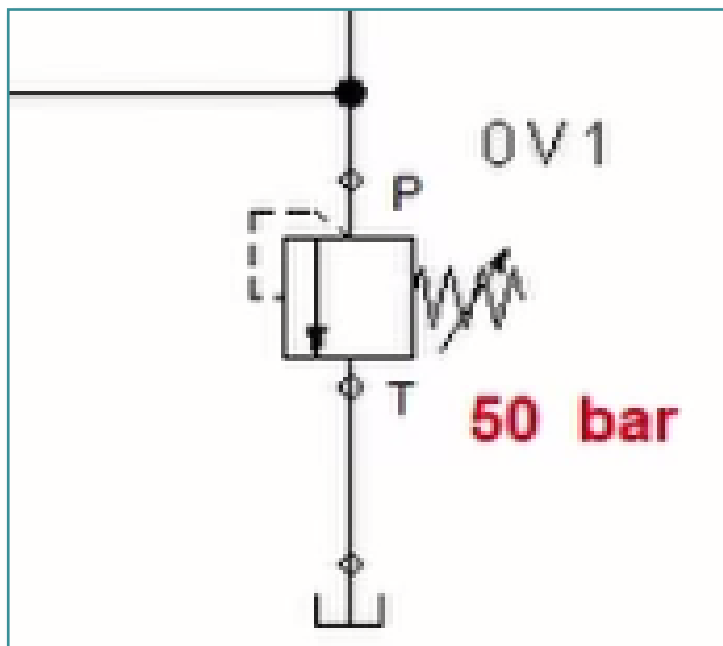
PredV

II. Choose the name of the valve that maintains the pressure **ABOVE** the set value.

PreIV

PredV

III. Choose the name of the valve depicted by this symbol:



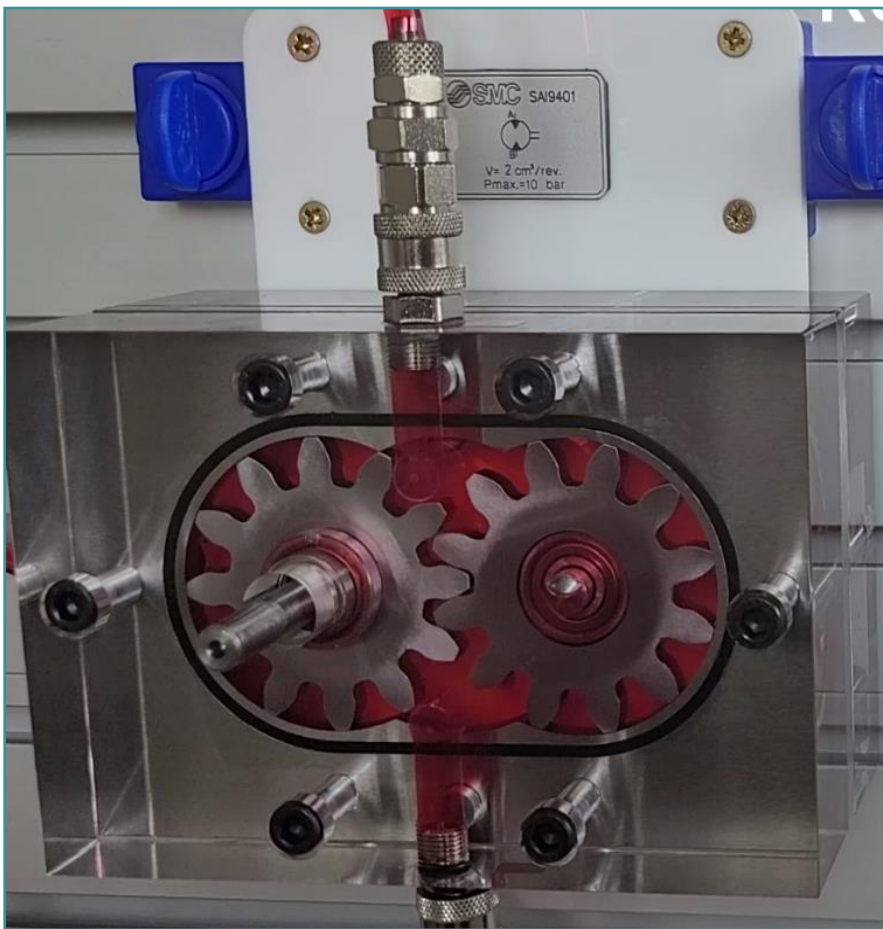
PreIV

PredV

IV. Choose the option that explains the use of PreIV application as a counterbalance valve.

- It stabilizes the hydrogenerator at work.
- It protects the piston rod from being pulled off.
- It ensures the quick movement of a piston rod.

V. Fill in the name of the depicted element: „Rotary“ (1 word)



VI. Photo credits: STEP IN partnership

VII. Notes:

STEP IN to the online world/virtual learning, Facilitation of access to Vocational practice through online teaching at secondary technical schools

The project is co-financed by the European Union, ERASMUS+ programme.

Contract number: 2020-1-SK01-KA226-VET-094400

The European Commission's support for the production of this material does not constitute an endorsement of the contents, which reflect the views only of the authors, and the Commission cannot be held responsible for any use which may be made of the information contained therein.

STEP IN project in partnership with:



Co-funded by the
Erasmus+ Programme
of the European Union

stepintolearning.eu



ENTRY-LEVEL TEST
MODULE 3 / TEST 2